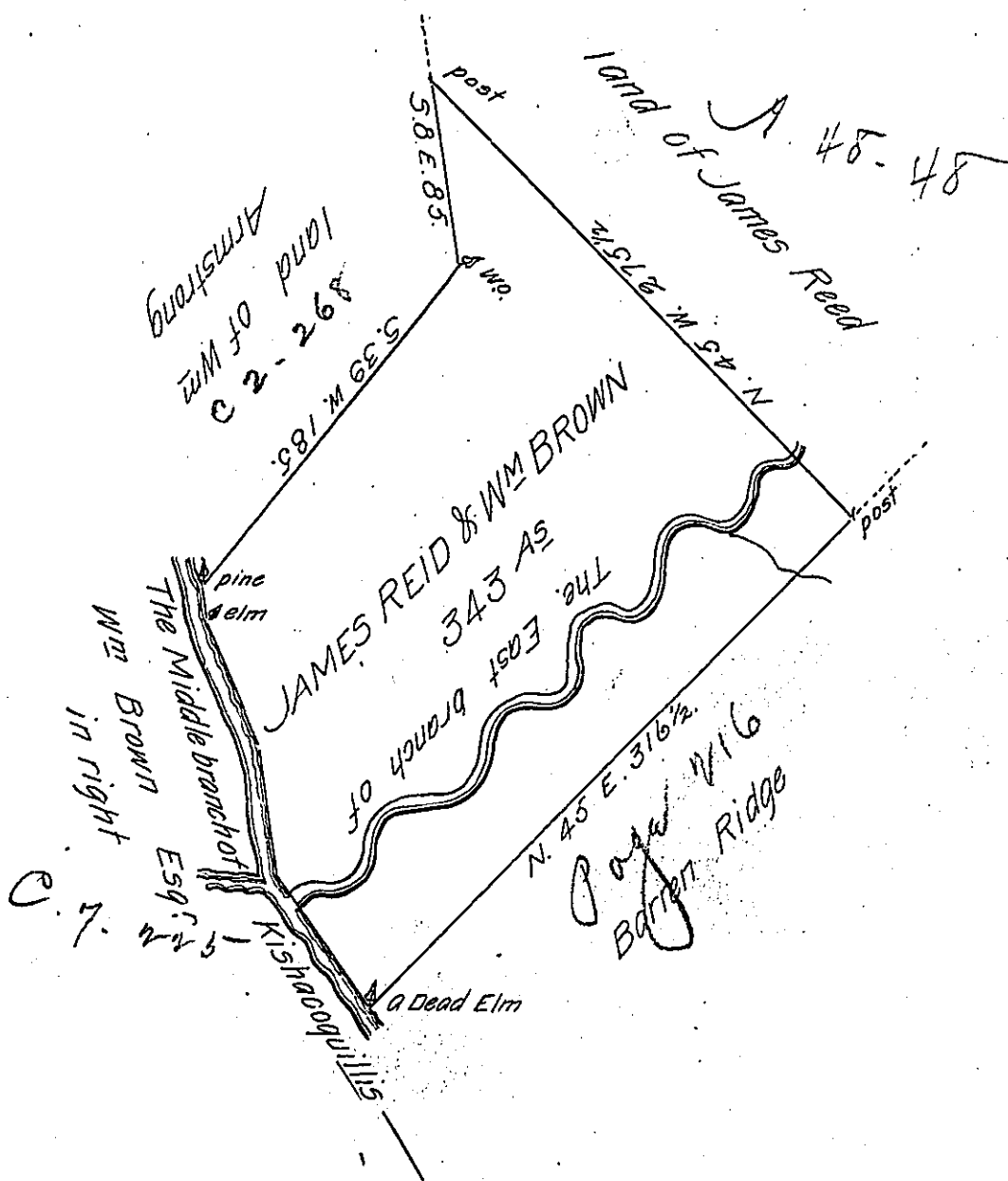


Courses & Distances

N. 45 E. 316 1/2
 N. 45 W. 275 1/2
 S. 8 E. 85.
 S. 39 W 185

Courses & distances down
 Kishacoquillis

S. 9 E. 16
 S. 23 E. 62
 S. 8. E. 57
 S. 34 E. 74



The Draught of a tract of land Situate in Armagh township Cumberland County containing three hundred & forty three acres & the Usual allowance of Six Per Cent for roads &c^a Surveyed for ^{James Reid} William Brown & ~~James Reid~~ Dec^r the 16th 1785 in pursuance of an order of Survey Dated at Philad^a August the 1st 1766. No. 465.

Pr. Jas Harris D.S.

John Lukens Esq^r. Surv^r. Gen^l!

IN TESTIMONY that the above is a copy of the original remaining on file in the Department of Internal Affairs of Pennsylvania, made conformably to an Act of Assembly approved the 16th day of February, 1833, I have hereunto set my Hand and caused the Seal of said Department to be affixed at Harrisburg, this twentyfirst day of September 1906.

Hoac R. Brown
 Secretary of Internal Affairs.